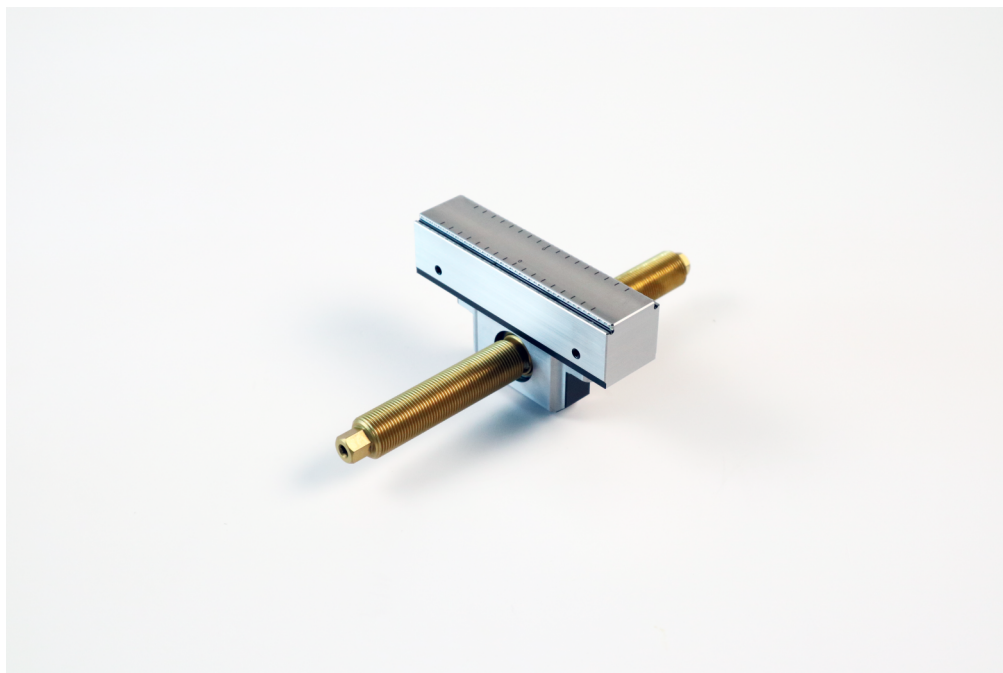


Makro-Grip® 125, Center Jaw + Spindle

jaw width 125 mm, jaw thickness 27 mm, spindle length 215 mm (old version)

Item No. 47205-TG27



Spindle length	215 mm (8.46")
Clamping range	2 x 85 mm (3.35")
Thread pitch	M20 x 1.5
Dimensions	Jaw width: 125 mm (4.92")
Workpiece shape	prismatic
Packaging Unit	1 Piece
Weight	1.74 kg (3.84 lbs)
Material	Steel