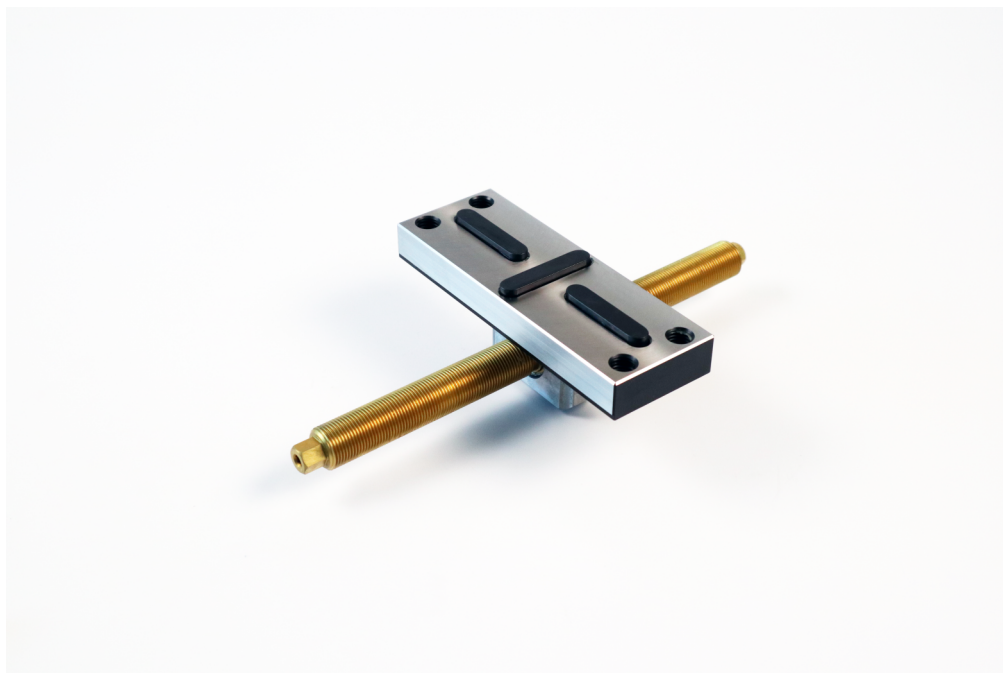


Profilo 125, Center Jaw + Spindle

jaw width 125 mm, spindle length 265 mm (old version)

Item No. 49150-TG



Spindle length	265 mm (10.43")
Thread pitch	M20 x 1.5
Dimensions	Jaw width: 125 mm (4.92")
Workpiece shape	prismatic / cylindrical / asymmetrical
Packaging Unit	1 Pack
Weight	2.01 kg (4.43 lbs)
Material	Steel